

ZEBRA POP 4 gambe / 4-legs

Design Luisa Battaglia



Scocca imbottita con anima in policarbonato.
Struttura a 4 gambe in acciaio tubolare ø mm 16 cromato
o verniciato. Per uso interno.

*Upholstered main body with polycarbonate core.
4-leg frame in 16 mm diam tubular chrome or coated steel.
For indoor use.*

FINITURA STRUTTURA FRAME FINISHING



cromato
chromed



VA
verniciato
antracite
*anthracite grey
coated*

TESSUTI E COLORI FABRICS AND COLOURS

TESSUTO / FABRIC



T3 25
grigio classico
classic grey



M2 09
verde pavone
peacock green



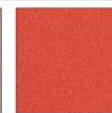
T5 27
zafferano
saffron



M1 05
visone
mink brown



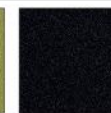
T4 51
beige
beige



T4 52
arancio
orange



T4 53
verde acido
lime green



T4 55
nero
black

CUOIO / LEATHER



CN 81
rosso
red



CN 82
moka
moka



CN 83
bianco
white



CN 84
nero
black



cuoio
leather
CN 84

SIMILPELLE / SIMIL-LEATHER



EP 72
rosso
red



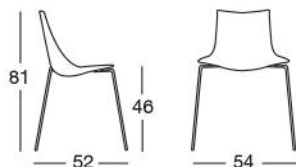
EP 73
moka
moka



EP 74
bianco
white



EP 75
nero
black



Struttura a 4 gambe
4-leg frame

Art. 2640

Imballo <i>Packing</i>	2 pezzi <i>2 pieces</i>
Peso unitario <i>Unit weight</i>	Kg 6,400
Misure imballo <i>Packing sizes</i>	65,5x57,5x99,5 cm

CATAS

Conforme EN 15373:2007
Compliant with EN 15373:2007



Distributed by: Parada One Design
120 - 11120 Bridgeport Road
Richmond, BC V6X 1T2
E: info@paradaonedesign.com
T: 604-264-0311
604-272-3310
F: 604-272-3316